

# Lifestyle self-management in patients with type 2 diabetes

Marie Clark

## ARTICLE POINTS

**1** Lifestyle and behavioural factors contribute to the development and management of diabetes.

**2** Patients and healthcare professionals find lifestyle change a challenging aspect of care.

**3** Psychological models of health behaviour change suggest several important determinants of self-management behaviour in diabetes.

**4** Brief, tailored, personalised interventions based on these theoretical perspectives do change behaviours.

**5** Negotiating behaviour change using brief motivational interviewing is a key concept of these interventions.

## KEY WORDS

- Lifestyle self-management
- Psychological models
- Motivational interviewing
- Tailored interventions
- Negotiating behaviour change

Marie Clark is Lecturer in Health Psychology, Department of Psychology, University of Surrey, Guildford.

## Introduction

**Lifestyle and behavioural factors play an important role in the development of diabetes, and lifestyle change is crucial to successful management. However, this is often the most challenging aspect of care for both patients and healthcare practitioners. This article describes the development of lifestyle self-management interventions that have been shown to be successful in helping patients reduce fat intake and increase physical activity levels. Importantly, these interventions, which are based on psychological models of health behaviour change, can potentially be incorporated into routine patient care in diabetes.**

**D**iabetes is a global health problem that is expected to present one of the 21st century's biggest medical challenges. The role of lifestyle and behavioural factors in the development and management of this chronic illness is now widely acknowledged. Evidence from cross-sectional and prospective studies demonstrates the role of obesity and a sedentary lifestyle as major risk factors for the development of type 2 diabetes (Tuomilehto, 1989; Perry, 1995; Harris et al, 1998).

Several studies have suggested that changing diet and/or exercise behaviours will reduce the risk of developing diabetes in individuals with impaired glucose tolerance (IGT). For example, Eriksson and Lindgarde (1991) found that a lifestyle intervention including diet plus exercise decreased the risk of diabetes by 50%. Similarly, a study conducted in China (Pan et al, 1997) reported a 25% risk reduction from either diet, exercise, or the combination, compared with a control group.

This link with behavioural and environmental factors has further been confirmed by the recent randomised controlled clinical trial of prevention of type 2 diabetes (Tuomilehto et al, 2001). This study was conducted to determine the feasibility and effects of a programme of changes in lifestyle designed to prevent or delay the onset of type 2 diabetes in subjects with IGT. Results indicate that lifestyle changes can reduce the risk of progression to diabetes by 58% over 4 years

in both men and women at high risk of the disease. Similarly, early results from the Diabetes Prevention Program (Knowler et al, 2002), which was developed to compare several lifestyle self-management strategies to prevent or delay type 2 diabetes in individuals with IGT, also provide evidence that changes in lifestyle are effective in preventing or delaying the development of diabetes.

The Diabetes Control and Complications Trial (DCCT, 1993) and the United Kingdom Prospective Diabetes Study (UKPDS, 1999) confirmed that, in individuals with diabetes, improved metabolic control (achieved via an intensive self-care regimen that included lifestyle change) was significantly associated with delayed onset and progression of microvascular complications. This link highlights the importance of expanding research into the psychosocial factors that influence self-care behaviour, with the aim of developing appropriate intervention programmes.

## Psychological models

Developing effective interventions to modify lifestyle self-management in diabetes requires the identification of factors that contribute to adherence to self-management behaviours. Models of health and illness behaviour developed by health psychologists suggest several variables that have been shown to be important determinants of self-management behaviour in diabetes. These include beliefs and personal models

of diabetes (Hampson et al, 1990), perceived severity and perceived vulnerability to complications (Weinstein, 1993), readiness or 'stage of change' (Ruggiero et al, 1997), self-efficacy or confidence (Anderson et al, 1995; Strecher et al, 1986), and barriers to self-management (Glasgow, 1994; Glasgow et al, 1997).

### Motivational interviewing

In recent years there has been a rise in interest in the inclusion of 'motivational interviewing' in interventions. This is a counselling technique designed to augment an individual's motivation to change problematic behaviours (Miller, 1983; Miller and Rollnick, 2002). It has been shown to change behaviours that can be difficult to modify, such as drinking habits (Bien et al, 1993) and weight control (Smith et al, 1997).

### Intervention programmes

The most successful lifestyle intervention programmes in type 2 diabetes have combined dietary restriction, exercise and behaviour modification. Wing and colleagues (Wing, 1993; Wing and Anglin, 1996) have conducted the most systematic research in the dietary area, focusing on intensive structured behavioural group and individual programmes for weight loss. However, long-term maintenance of changes made after participation in these interventions remains elusive. At the 1-year follow-up, for example, patients have typically regained 30% of their initial weight loss; the few studies with 3–5-year follow-up suggest that most patients are back to baseline by this time (Wilson, 1994; Wadden and Stunkard, 1989).

Wing and colleagues found that long-term interventions (e.g. regular meetings over periods as long as 2 years) might be required to produce substantial weight loss. Indeed, at a recent conference held by the National Heart, Lung and Blood Institute, it was suggested that maintenance was now the primary concern for interventions modifying behavioural risk factors such as obesity, sedentary lifestyle and high-fat diets (Orleans, 2000; Wing et al, 2000).

In contrast to these studies and the call for longer, more intensive interventions, Glasgow and colleagues (1992) have

developed brief, ongoing self-management interventions that can be integrated into routine patient visits, and have demonstrated short-term success in improving self-care among older patients with type 2 diabetes. Further studies have also demonstrated that a brief, low-cost computer-assisted dietary intervention conducted during routine outpatient visits produced sustained changes at 12-month follow-up in fat intake and cholesterol levels, but not in weight loss (Glasgow et al, 1996; Glasgow et al, 1997). However, these studies did not contain a physical activity component.

Several studies measuring physical activity outcomes show variable results. Hanefeld and colleagues (1991) demonstrated an increase in activity at 5 years with a didactic intervention. Among studies with a shorter follow-up, Wood (1989) noted an increase in physical activity at 4 months, Glasgow et al (1992) found an increase in the number of minutes of activity 3 months after an intensive generic intervention, and Wierenga (1994) found improved physical activity after five intervention sessions at 4 months. However, other studies report no changes in physical activity compared with control groups (Wing et al, 1985; Uusitupa, 1996; Agurs-Collins et al, 1997).

### Tailored interventions

A key feature of some of these interventions is tailoring. Instead of delivering the same intervention to all participants, each individual received a personalised version based on careful prior assessment of their particular problems and issues (Rimer and Glassman, 1998; Kreuter and Skinner, 2000).

Although the reasons why tailored interventions might be more effective than general health education is still a matter of speculation, patient education programmes and materials that are customised to address the unique needs and concerns of specific patients have shown promise in changing a range of health-related behaviours (Campbell et al, 1994; Skinner et al, 1994; Strecher et al, 1994; Kreuter and Strecher, 1996; Kreuter et al, 1997), suggesting that people are more likely to process information thoughtfully when they perceive it to be personally relevant. Thus, tailored interventions should be more

### PAGE POINTS

- 1 There is growing interest in the use of motivational interviewing in interventions.
- 2 This is a counselling technique designed to augment an individual's motivation to change problematic behaviours.
- 3 The most successful lifestyle intervention programmes in type 2 diabetes combined dietary restriction, exercise and behaviour modification.
- 4 Tailored interventions seem to be more effective than general health education.
- 5 This might be because patients are more likely to process information thoughtfully when they perceive it to be personally relevant.

**PAGE POINTS**

1 There is a pressing need for tailored lifestyle self-management interventions that can be integrated into routine care.

2 To address this, a brief tailored self-management intervention was developed and evaluated in a randomised controlled trial.

3 The intervention aimed to reduce the amount of fat consumed and to increase lifestyle physical activity levels.

4 Patients were helped to set personalised dietary and physical activity intervention goals, and to develop problem-solving strategies for anticipated problems.

likely to stimulate change than untailed interventions. Indeed, studies have found that, compared with untailed messages, tailored messages are more likely to be read and remembered, saved, discussed with others, and be perceived by readers as interesting, personally relevant and having been written especially for them (Skinner et al, 1994; Brug et al, 1996).

**Brief tailored interventions**

In the UK, there is a pressing need for tailored lifestyle self-management interventions (incorporating both dietary and physical activity components) that can be integrated into routine care and thereby improve the reach of the intervention (Glasgow et al, 1999). In addition, because type 2 diabetes is associated with life-threatening complications and worsening control over time, interventions that reduce risk factors such as high-fat diets and physical inactivity through lifestyle modification should have long-term health benefits for these patients.

Accordingly, we developed a brief, tailored, self-management intervention to improve adherence to recommended lifestyle changes in patients with type 2 diabetes (Clark and Hampson, 2001), and evaluated this intervention in a randomised controlled trial. The aim of the intervention was to reduce the amount of fat consumed and to increase lifestyle physical activity levels.

**The current intervention**

This study adapted an intervention developed at the Oregon Research Institute, which has been shown to significantly reduce fat intake and cholesterol levels in older patients with diabetes (Glasgow et al, 1996).

During visits (of approximately 30 minutes) to a diabetes centre, patients were assisted in setting specific, personalised dietary and physical activity intervention goals and in developing problem-solving strategies for anticipated problems. A diagrammatic representation of recruitment into the study and the assessment procedure is shown in Figure 1. Follow-up phone calls were made to reinforce patients' progress and to help solve any difficulties.

Through the use of focused assessment instruments completed before their visits, a highly personalised intervention that addressed diabetes self-management issues was conducted. Specific self-management behaviours leading to high-fat intake and low levels of lifestyle physical activity were identified. Based on the results of these assessments, the patient and interventionist negotiated a specific eating and physical activity goal and strategies to overcome barriers to achieving these goals. The patient perspective was addressed through assessment of patient beliefs about the seriousness of diabetes and about the importance of self-management. Social-environmental

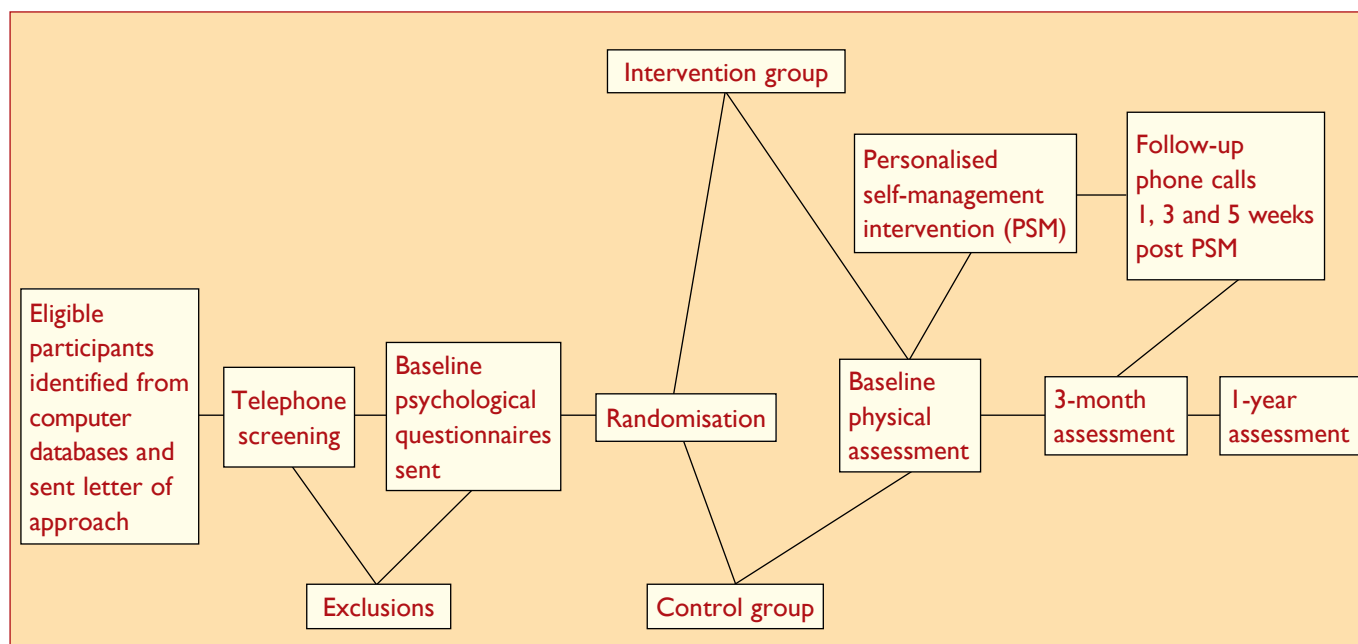


Figure 1. Procedure for intervention study.

influences were addressed by assessing perceived barriers to low-fat eating and physical activity. These self-management issues were summarised on user-friendly feedback forms for both patients and practitioners (Figure 2).

**Negotiating behaviour change**

Negotiating behaviour change using a form of brief motivational interviewing to help people work through ambivalence about changing their behaviour was a key concept of the intervention. Such ambivalence is a common problem in healthcare consultations. Most patients do not come

forward saying they want to change their behaviour. Decisions to change behaviours are not always easy to make, and they are often preceded by fluctuating motivation and feelings of ambivalence in which a decision can be made and then reversed before behaviour change takes place.

Our understanding of this process has been helped by the Stages of Change model (Prochaska and DiClemente, 1984), which offers a framework into which different approaches to behavioural change can be integrated. Within this model, five stages of readiness for change have been identified. People are said to progress through these

**PAGE POINTS**

**1** Self-management issues were summarised on user-friendly feedback forms for patients and practitioners.

**2** Negotiating behaviour change was a key concept of the intervention.

**3** For this, a form of brief motivational interviewing was used to help people work through ambivalence about changing their behaviour.

**GOAL**

To stop eating fatty foods between meals.

**PROBLEMS IN ACHIEVING GOAL**

1. Feel like snacking in front of television in the evening
2. I have 'junk' food around the house

**STEPS FOR ACHIEVING GOAL**

1. *How will you recruit support?*  
e.g. Tell a friend, relative, colleague, partner.  
Get whoever lives with you to join in.
2. *How will you change your environment?*  
e.g. Clear the cupboards and fridge of fatty, between-meal snacks.  
Take two pieces of fruit to work each day.
3. *What do you need to buy to achieve your goal?*  
e.g. Need to buy plenty of fruit and extra bread.
4. *When will you do this?*  
e.g. I will do this tomorrow.
5. *At what time of day do you need to change your eating pattern?*  
e.g. If you know evenings are a 'danger time', make sure you fill up on healthy starchy foods at your meal, or change your routine to keep your mind off food.
6. *Do you need to substitute in another food/drink? Is it a suitable low-fat substitute?*  
e.g. Semi-skimmed milk instead of whole milk.  
Flora Light instead of butter.

**CHECKLIST:** Tick each one when completed.

1..... 2..... 3..... 4..... 5..... 6.....

Figure 2. Example of a goal-setting sheet for the intervention group.

stages before they reach a stable 'healthier' lifestyle. This process is often cyclical, with most people relapsing several times before they achieve long-term change. Thus, importantly, relapse is incorporated as part of the process of change, rather than as failure. Using this framework, motivation can

be seen as a state of readiness or eagerness to change, and raises the possibility of matching counselling methods to the individual's stage of readiness to change.

**Results**

The intervention was effective in producing dietary change. Intervention participants achieved significant reductions in their fat-related eating habits between the baseline (T1) and 3-month (T2) assessments, and these were maintained at the 12-month (T3) assessment (Figure 3). Significant improvements were also obtained on self-report measures of physical activity (Figure 4).

Moreover, these changes were confirmed by the objective measurements of waist circumference, which showed a significant reduction (average 2 cm) that was maintained at 12 months, and body mass index (BMI). The control group's BMI increased significantly, whereas the intervention group maintained their BMI across the follow-up period (Figure 5).

These results extend those of past research by demonstrating the effectiveness of a tailored intervention in which participants work on two goals simultaneously, and that the intervention can be successfully implemented in the NHS context.

**Conclusions**

Although it is now widely acknowledged that lifestyle and behavioural factors play an important role in the development and management of type 2 diabetes, patients find it very difficult to make the necessary lifestyle changes, and report that traditional diet and exercise prescriptions are often unrealistic and impossible to follow long term. The results from our studies are encouraging in this regard. The key feature of the intervention is that a highly personalised intervention, which addresses the important influences on lifestyle self-management in type 2 diabetes, can be conducted in a brief period of time.

The intervention can potentially be integrated into routine patient care in general practice, thus reaching a broader audience. This approach could also be extended to other patient groups who would benefit from lifestyle changes. Changing eating patterns and increasing physical activity are

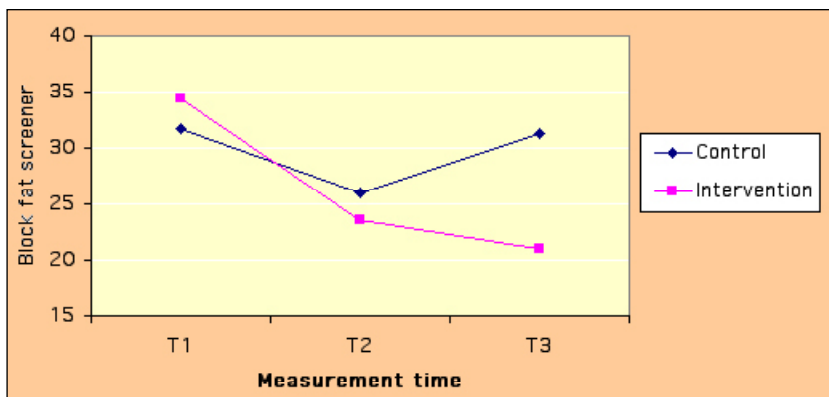


Figure 3. Change in scores for the Block fat screener measure of fat intake (higher scores worse) for intervention and control groups between the baseline (T1), 3-month (T2) and 12-month (T3) assessments.

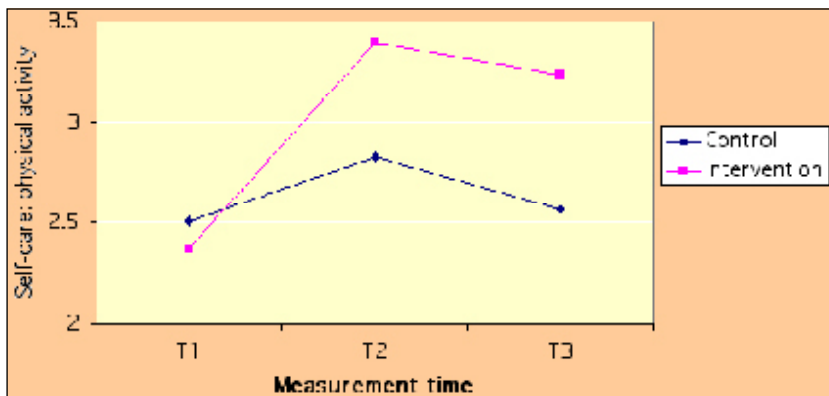


Figure 4. Change in the Summary of self-care 'Physical activity' subscale (higher scores better) for intervention and control groups between the baseline (T1), 3-month (T2) and 12-month (T3) assessments.

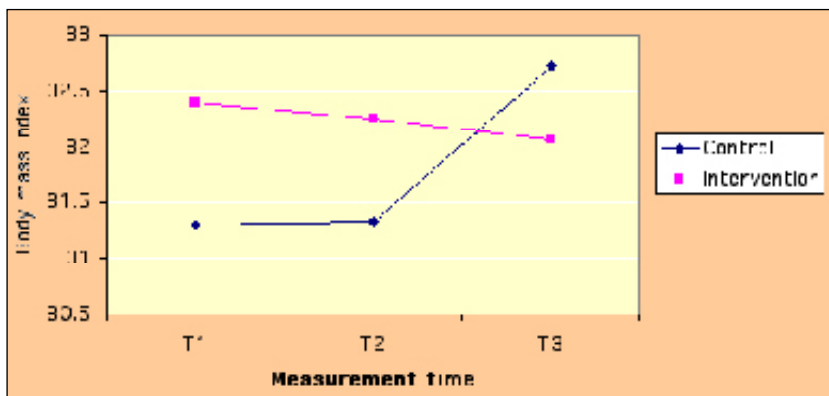


Figure 5. Change in body mass index scores (higher scores worse) for intervention and control groups between the baseline (T1), 3-month (T2) and 12-month (T3) assessments.



often regarded as the most challenging and difficult aspects of care for both patients and clinicians, and healthcare professionals frequently report that they do not have 'the tools' to meet the demanding challenge of helping people to change their lifestyle. Our research, which is one of the few randomised controlled trials of lifestyle interventions to be conducted outside of the USA, makes a significant contribution to meeting this challenge. ■

- Agurs-Collins T, Kumanyika S, Ten H, Adams-Campbell L (1997) A randomized controlled trial of weight reduction and exercise for diabetes management in older African-American subjects. *Diabetes Care* **20**: 1503-11
- Anderson RM, Funnell MM, Butler PM et al (1995) Patient empowerment. Results of a randomized controlled trial. *Diabetes Care* **18**: 943-9
- Bien TH, Mille WR, Borough JM (1993) Motivational interviewing with alcohol outpatients. *Behavioural Cognitive Psychotherapy* **21**: 347-56
- Brug J, Steenhuis I, Van Assema P, De Vries H (1996) The impact of a computer-tailored nutrition intervention. *Preventive Medicine* **25**: 236-42
- Campbell MK, DeVellis BM, Strecher VJ et al (1994) Improving dietary behavior: the effectiveness of tailored messages in primary care settings. *American Journal of Public Health* **84**: 783-7
- Clark M, Hampson SE (2001) Implementing a psychological intervention to improve lifestyle self-management in type 2 diabetes. *Patient Education and Counseling* **42**: 247-56
- Diabetes Control and Complications Trial Research Group (1993) The effect of intensive treatment of diabetes on the development and progression of long-term complications in insulin-dependent diabetes mellitus. *New England Journal of Medicine* **329**: 977-86
- Eriksson KF, Lindgarde F (1991) Prevention of type 2 (non-insulin dependent) diabetes mellitus by diet and physical exercise: the six year Malmo feasibility study. *Diabetologia* **34**: 891-8
- Glasgow RE (1994) Social-environmental factors in diabetes: barriers to diabetes self-care. In: Bradley C (ed). *Handbook of Psychology and Diabetes*. Harwood Academic, Switzerland: 335-49
- Glasgow RE, Hampson SE, Strycker LA, Ruggiero L (1997) Personal-model beliefs and social environmental barriers related to diabetes self management. *Diabetes Care* **20**: 556-61
- Glasgow RE, Toobert DJ, Hampson SE (1996) Effects of a brief office-based intervention to facilitate diabetes dietary self-management. *Diabetes Care* **19**: 835-42
- Glasgow RE, Toobert DJ, Hampson SE et al (1992) Improving self-care among older patients with type II diabetes: the 'Sixty Something' study. *Patient Education and Counseling* **19**: 61-74
- Glasgow RE, Vogt TM, Boles SM (1999) Evaluating the public health impact of health promotion interventions: The RE-AIM framework. *American Journal of Public Health* **89**: 1322-7
- Hampson SE, Glasgow R, Toobert DJ (1990) Personal models of diabetes and their relations to self-care activities. *Health Psychology* **9**: 632-46
- Hanefeld M, Fischer S, Schmechel P et al (1991) Diabetes intervention study: multi-intervention trial in newly diagnosed NIDDM. *Diabetes Care* **14**: 308-17
- Knowler WC, Barret-Conno E, Fowler SE (2002) Reduction in the incidence of type 2 diabetes with lifestyle intervention or metformin. *New England Journal of Medicine* **346**: 393-403
- Harris MI, Flegal KM, Cowie CC et al (1998) Prevalence of diabetes, impaired fasting glucose, and impaired glucose tolerance in U.S. adults: the Third National Health and Nutrition Examination Survey, 1988-1994. *Diabetes Care* **21**: 518-24
- Kreuter MW, Lezin N, Kreuter M, Green L (1997) *Community Health Promotion Ideas That Work*. Jones & Barlett, Massachusetts
- Kreuter MW, Skinner CS (2000) What's in a name? *Health Education Research* **15**: 1-4
- Kreuter MW, Strecher VJ (1996) Do tailored behavior change messages enhance the effectiveness of health risk appraisal? Results from a randomized trial. *Health Education Research* **11**: 97-105
- Miller W (1983) Motivational interviewing with problem drinkers. *Behavioural Psychotherapy* **11**: 147-72
- Miller WR, Rollnick S (2002) *Motivational Interviewing: Preparing People for Change*. 2nd edn. Guilford Publications, New York
- Orleans CT (2000) Promoting the maintenance of health behavior change: recommendations for the next generation of research and practice. *Health Psychology* **19**(Suppl 1): 76-83
- Pan XR, Li GW, Hu YH et al (1997) Effects of diet and exercise in preventing NIDDM in people with impaired glucose tolerance. *Diabetes Care* **20**: 537-44
- Perry IJ (1995) Prospective study of risk factors for development of non-insulin dependent diabetes in middle aged British men. *British Medical Journal* **310**: 560-4
- Prochaska JO, DiClemente CC (1984) *The Transtheoretical Approach: Crossing Traditional Boundaries of Change*. J Irwin, Homewood, Illinois
- Rimer BK, Glassman B (1998) Tailoring communications for primary care settings. *Methods of Information in Medicine* **37**: 171-8
- Ruggiero L, Glasgow RE, Dryfoos JM et al (1997) Diabetes self-management: self-reported recommendations and patterns in a large population. *Diabetes Care* **20**: 568-76
- Skinner CS, Strecher VJ, Hespers H (1994) Physicians' recommendations for mammography: do tailored messages make a difference? *American Journal Of Public Health* **84**: 43-9
- Smith DE, Heckemeyer CM, Kratt PP, Dehryl AM (1997) Motivational interviewing to improve adherence to a behavioral weight-control program for older obese women with NIDDM. *Diabetes Care* **20**: 52-4
- Strecher VJ, DeVellis BM, Becker MH, Rosenstock IM (1986) The role of self-efficacy in achieving health behavior change. *Health Education Quarterly* **13**: 73-91
- Strecher VJ, Kreuter M, Den Boer DJ et al (1994) The effects of computer-tailored smoking cessation messages in family practice settings. *Journal of Family Practice* **39**: 262-70
- Tuomilehto J (1989) Primary prevention of non-insulin-dependent diabetes mellitus: a dream or reality? In: Alberti KGMM, Mazze RS (eds). *Current Trends in Non-Insulin-Dependent Diabetes Mellitus*. Elsevier Science, Amsterdam: 101-15
- Tuomilehto J, Lindstrom J, Eriksson JG et al (2001) Prevention of type 2 diabetes mellitus by changes in lifestyle among subjects with impaired glucose tolerance. *New England Journal of Medicine* **344**: 1343-50
- United Kingdom Prospective Diabetes Study (1999) Quality of life in type 2 diabetic patients is affected by complications but not by intensive policies to improve blood glucose or blood pressure control (UKPDS 37). *Diabetes Care* **22**: 1125-36
- Uusitupa M (1996) Early lifestyle intervention in patients with non-insulin dependent diabetes mellitus and impaired glucose tolerance. *Annals of Medicine* **28**: 445-9
- Wadden TA, Stunkard AJ (1989) Obesity: etiology and treatment of a major medical problem. In: Cheran S (ed). *Psychosomatic Medicine: Theory, Physiology and Practice*. International Universities Press, Madison, WI: 707-62
- Weinstein N (1993) Testing four competing theories of health-protective behavior. *Health Psychology* **12**: 324-33
- Wierenga M (1994) Lifestyle-modification for weight control to improve diabetes health status. *Patient Education and Counseling* **23**: 33-40
- Wilson GT (1994) Behavioral treatment of obesity: thirty years and counting. *Advances in Behavioral Research and Therapy* **16**: 31-75
- Wing RR (1993) Behavioural treatment of obesity. *Diabetes Care* **16**: 193-9
- Wing RR, Anglin K (1996) Effectiveness of a behavioral weight control program for blacks and whites with NIDDM. *Diabetes Care* **19**: 409-13
- Wing RR, Epstein LH, Nowalk MP, Koeske R, Hagg S (1985) Behavior change, weight loss and physiological improvements in type II diabetic patients. *Journal of Consulting and Clinical Psychology* **53**: 111-22
- Wing RR, Voorhees CC, Hill DR (2000) Supplementary issue: Maintenance of behavior change in cardiorespiratory risk reduction. *Health Psychology* **19**(Suppl 1): 1-91
- Wood ER (1989) Evaluation of a hospital-based education program for patients with diabetes. *Journal of the American Dietetic Association* **89**: 354-8