

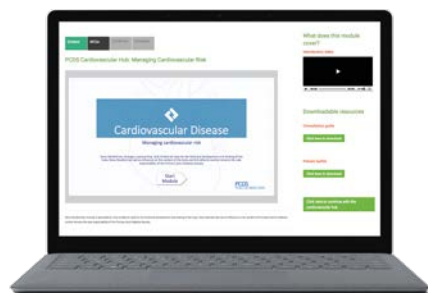
Introducing the Primary Care Diabetes Society Clinical Hubs

We all recognise the value of continued education; attending international meetings and interpreting emerging data is time-consuming and often impractical for busy healthcare professionals. In recent years, an explosion of new drug classes, new indications, new consensus guidance and, of course, the advent of cardiovascular outcomes trials, have redefined what best practice looks like.

To capture this, a faculty of Primary Care Diabetes Society (PCDS) members initiated the development of a series of educational hubs, to help navigate topics influencing the management of diabetes today. The **PCDS Clinical Hubs** will help busy healthcare professionals to digest the most relevant advances in diabetes and incorporate them into everyday practice.

CPD opportunities

At the centre of the PCDS Clinical Hubs are a series of four online modules addressing what the faculty feel to be the most relevant topics impacting diabetes management. Each interactive module has been purposely designed to be completed in around 30 minutes and is worth 0.5 CPD credits. They have also been rationally designed with multiple healthcare professionals in mind, allowing users the option to delve into as much detail as they see fit – or indeed bypass content they already know.



Interactive CPD modules

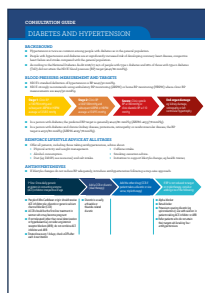
Practical accompanying resources

In addition to the modules, we have developed a suite of other useful resources: our consultation guides are short, practical reference tools summarising the clinical topics explored in the modules. These are intended to be used as either reflective material or at the point of consultation. We think they will be a real winner amongst our GP and practice nurse colleagues.

Patient leaflets

Finally, we have pulled together some helpful information for the patient: in these patient leaflets, we've sought to create material that supports the education you provide during your consultation and, to some degree, pre-empt key questions your patients may have once they've left. Our hope is that the patient leaflets will serve the dual purpose of facilitating discussion during consultation and providing patients with the knowledge they need for enhanced self-management.

I am delighted to announce that our first two hubs – the *Cardiovascular Hub* and the *GLP-1 Hub* – are now live and are freely accessible at: www.diabetesonthenet.com/pcds-hubs. I urge you to explore the high-quality content of these hubs, take the modules and make use of the accompanying practical and patient materials. We will be adding new hubs and augmenting the existing ones over time. ■



Consultation guides



Patient leaflets



David Millar-Jones
GPSI in Cwmbran, Wales,
and former Chair
of the Primary Care
Diabetes Society

Citation: Millar-Jones D (2019)
Introducing the Primary Care
Diabetes Society Clinical
Hubs. *Journal of Diabetes
Nursing* 23: JDN050

Novo Nordisk has, through a sponsorship, fully funded all costs for the technical development and hosting of the hubs. Novo Nordisk has had no influence on the content of the hubs and full editorial control remains the sole responsibility of the Primary Care Diabetes Society.