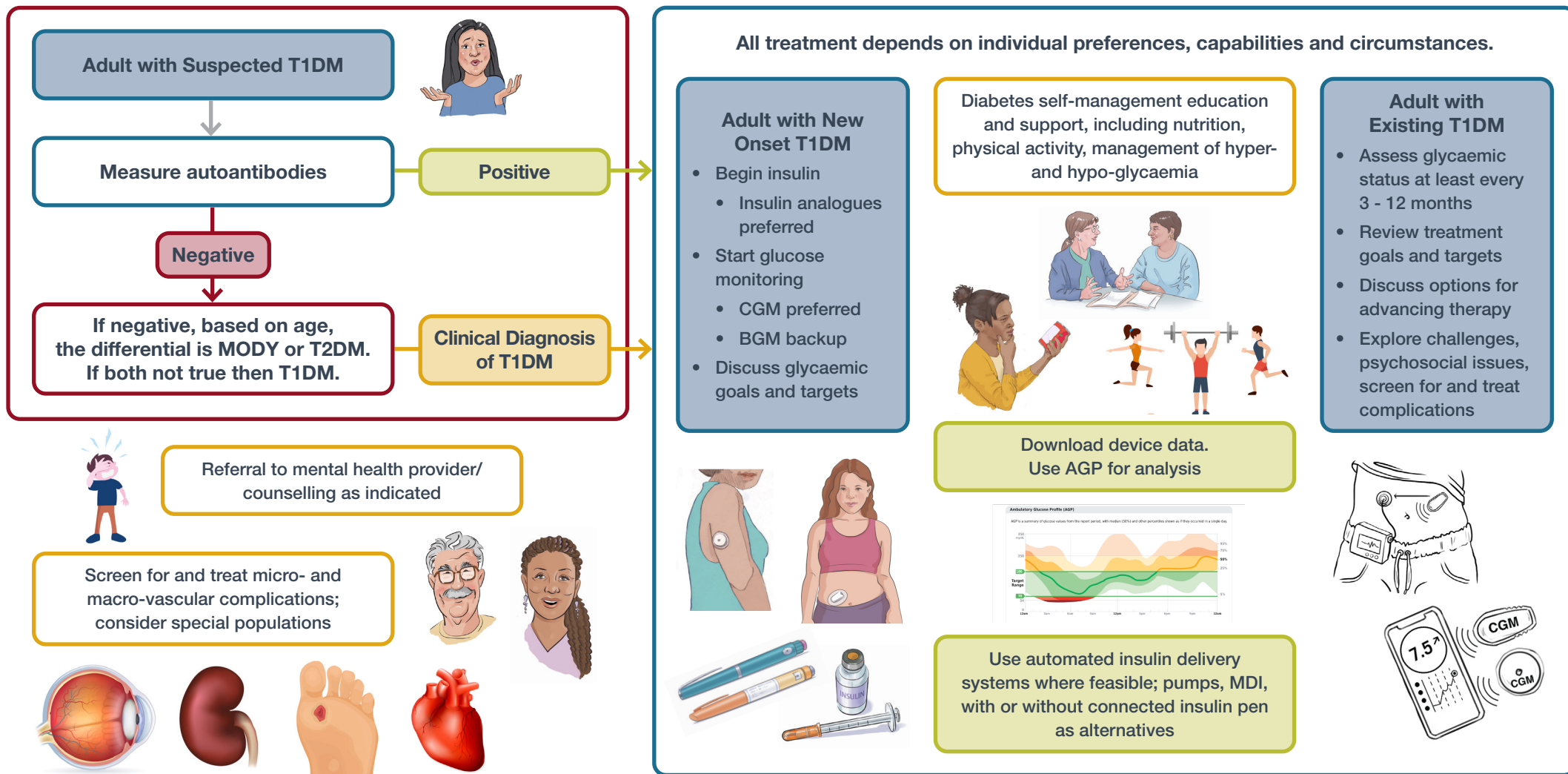


# The management of type 1 diabetes in an adult



T1DM = type 1 diabetes mellitus, T2DM = type 2 diabetes mellitus, MODY = maturity onset diabetes of the young, CGM = continuous glucose monitoring, BGM = blood glucose monitoring, AGP = ambulatory glucose profile, MDI = multiple daily injections

We thank the Leona M. and Harry B. Helmsley Charitable Trust for their assistance with the images.