

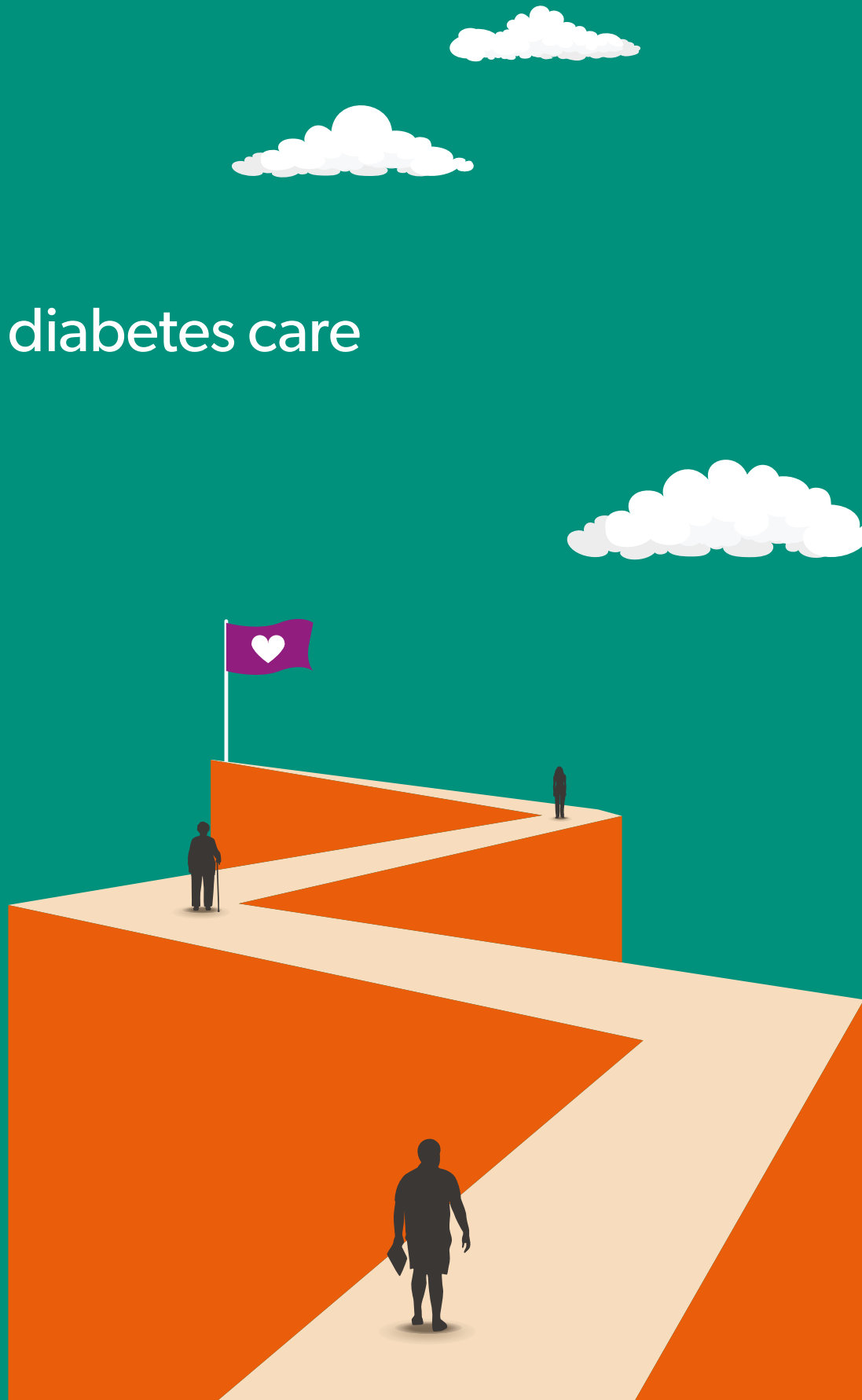
This conference was developed by the PCDO Society in conjunction with OmniaMed Communications. The sponsoring pharmaceutical company, Boehringer Ingelheim, has contributed financial support towards this event but has had no input into the conference agenda, speaker selection or presentations, with the exception of its symposium session, for which it is fully responsible.

OMNIAMED
COMMUNICATIONS

PCDO
Society

A lifetime of diabetes care


Live webinar
18 April 2026



SPONSOR

 **Boehringer
Ingelheim**



Time	Session	Speakers
09.00 – 09.10	Welcome & Introduction	Naresh Kanumilli
09.10 – 09.50	Module 1: Early-onset type 2 diabetes	Ashling Kennedy
09.50 – 10.30	Module 2: Individualised care in type 2 diabetes	Lisa Devine and Patrick Divilly
10.40 – 11.25	<p>The bigger picture in focus: How cardio, renal and metabolic conditions connect</p> <p>This promotional meeting has been developed, organised and funded by Boehringer Ingelheim and is intended for healthcare professionals in the Republic of Ireland only. The speakers have received an honorarium for giving this presentation. Boehringer Ingelheim products will be discussed during this presentation.</p> <p>NP-GB-107069 March 2026</p> 	Professor Donal Sexton and Professor Diarmuid Smith
11.25 – 12.05	Module 3: Older adults in the community	Hannah Beba, Nicola Milne and Lisa Devine
12.05 – 12.45	Module 4: Older adults in residential care and palliative settings	Patricia Murray, Dorothy Moore and Una O’Neill
12.45	Close	

SPEAKER BIOGRAPHIES



Lisa Devine

GP, Co. Wicklow

Lisa Devine is a GP in County Wicklow. She initially trained in hospital medicine, gaining her Membership of the Royal College of Physicians of Ireland before realising that her vocation lay in General Practice. She trained as a GP and gained her Membership of the Irish College of General Practitioners of Ireland.

Lisa has several special interests, in particular diabetes, chronic care and medical education. In recent years she has enjoyed contributing to the Irish General Practice point of view in Ireland via her work with the East Coast Area Diabetes Steering Group. She has worked in medical education as a writer, tutor, education creator and Course Director.



Una O'Neill

ANP Diabetes Integrated Care, HSE St Mary's Community Services, Co. Kildare

During her 17-year journey in diabetes care, Una O'Neill has worked in primary and secondary care settings, gaining a comprehensive understanding of diabetes care from various perspectives. Her recent completion of a Master's in Advanced Nursing Practice has further fuelled her goal of providing the highest level of care to individuals with diabetes. This diverse experience has honed her skills and deepened her empathy for those with diabetes, highlighting the importance of a holistic approach to their care.

Over the past ten years, Una's unwavering commitment to integrated care has made a significant impact. Working closely with GP practices, she has provided coordinated care for people with type 2 diabetes. In this role, she has empowered patients to self-manage their diabetes through education on lifestyle changes and the development of personalised care plans and timely treatment, providing a complete episode of care.

Una has led and coordinated various study days, including conferences and webinars, over the past eight years. These efforts have been tremendously successful and have enabled her to disseminate valuable information to healthcare professionals.



Hannah Beba

Consultant Pharmacist, West Yorkshire Health & Care Partnership

Hannah Beba is an RPS-approved Consultant Pharmacist working for West Yorkshire Health and Care Partnership. She is a member of the medicines optimisation team and works seamlessly between the Integrated Care Board and provider organisations to effect positive change for people living with diabetes. Hannah's role is a primary care-focused, integrated care role. She believes there are fantastic opportunities here for multidisciplinary teams to provide holistic, unparalleled care to people living with diabetes. Hannah is driven to tackle inequalities in care and has focused work around diabetes technology, multimorbidity in diabetes and obesity in the last few years.

On a Leeds and West Yorkshire footprint, Hannah chairs the Expert Reference Groups for Cardio-Renal-Metabolic Medicine. These multidisciplinary, multistakeholder groups focus on taking a population health management approach to care. Hannah is also clinical lead for the obesity portfolio of work in West Yorkshire Health & Care Partnership. Further afield, Hannah is co-chair of the Council of Healthcare Professionals at Diabetes UK.

Hannah is a clinical academic and is passionate about education. She regularly speaks at national conferences and events, and in addition she is a tutor for the University of Warwick MSc Programme for Diabetes. Hannah is currently also an NIHR pre-doctoral fellow focusing her research on how we can implement impactful renal care for people living with diabetes in a primary care setting.



Patrick Divilly

Consultant in Endocrinology and Diabetes Mellitus, St Vincent's University Hospital

Dr Patrick Divilly is a specialist endocrinologist and clinical researcher with expertise in diabetes, technology and hypoglycaemia. He graduated in Medicine from University College Dublin and completed Higher Specialist Training in Endocrinology, Diabetes Mellitus and General Internal Medicine, earning specialist registration with the Irish Medical Council in 2022.

Patrick holds a PhD from King's College London, where his research focused on continuous glucose monitoring and the clinical, psychological and health-economic impacts of hypoglycaemia, contributing to large international studies such as Hypo-METRICS within the Hypo-RESOLVE consortium.

Clinically, he practises as a Consultant in Diabetes Mellitus at St Vincent's University Hospital and CHO 6. He has a strong interest in diabetes technology, health economics and mental health, and he is a regular invited speaker at national and international meetings.



Naresh Kanumilli

GP with a Special Interest in Diabetes and Cardiology, Manchester

Naresh Kanumilli has been a GP in South Manchester for the past 20 years and he has a specialist interest in Cardio–Kidney–Metabolic disease.

He is a Diabetes UK Clinical Champion, a community consultant in diabetes at Manchester University NHS Foundation Trust and Chair of the Diabetes Board for Greater Manchester. He has a very keen focus on management of chronic conditions in the community and hence has been actively involved in setting up and running community-based clinics both in cardiology and diabetes. He is actively involved with the current integration agenda to provide patients with seamless care between primary and secondary sectors. He is also keen to ensure that patients are seen at the right time, in the right place and by the right person.

Naresh is the Clinical Network Lead for Diabetes across Greater Manchester and East Cheshire. He has developed the diabetes strategy for Greater Manchester and is actively involved in the development of pathways and strategies for long-term conditions within the new Integrated Care System structure. He is the honorary primary care research lead for diabetes at the Greater Manchester Clinical Research Network. The focus of this role is to get primary care involved in research and help the development of real-world studies. He has presented at numerous conferences both on clinical and non-clinical topics, and is actively involved in GP training and the training of nurses.

In addition to chairing the PCDO Society, he is also on the board of trustees for the South Asian Health Foundation and a director in the charity Vision Beyond Autism.



Ashling Kennedy

Integrated Care Diabetes Consultant

Dr Ashling Kennedy is a Consultant in Endocrinology and Diabetes Mellitus. She is currently the lead consultant for Integrated Diabetes Care in Cork University Hospital and Community Health Organisation 4. Dr Kennedy is a graduate of the Royal College of Surgeons in Ireland and completed her higher specialist training in endocrinology and diabetes in 2023. Dr Kennedy has a special interest in Type 2 Diabetes. She also has a keen interest in epidemiology and public health having recently completed a MPH in UCC.



Nicola Milne

PCN DiaST Lead Diabetes Specialist Nurse and Clinical Lead for the Greater Manchester Diabetes Clinical Network

Nicola Milne qualified as a Registered General Nurse and Midwife in 1998 and 1991, respectively, prior to moving into primary care in 2002, where she worked as a Practice Nurse for sixteen years until April 2018. Whilst retaining a generalist role, Nicola had a special interest in diabetes, with a key focus on ensuring effective, accessible care. She moved to establish the Community Diabetes Education and Support Team within central Manchester – a finalist in the Diabetes Quality in Care Awards in 2022.

As a co-author of the document *Best Practice Diabetes Care within the Primary Care Network*, Nicola worked to put the evidence from the document into practice as the DiAST (Diabetes SupportT) Lead across a Primary Care Network in South Manchester from 2022 to 2024. She continues to work in primary care and is also the Diabetes Specialist Nurse Lead for the Greater Manchester and East Cheshire Strategic Clinical Network.

Nicola has presented abstracts at multiple conferences and has become increasingly involved in the education of healthcare professionals. She has published works in chronic kidney disease and diabetes and continues to be involved in projects focusing upon various aspects of diabetes management.

Nicola has previously served as Chair of the Diabetes UK Professional Conference Organising Committee for Liverpool and was a member of the NICE Diabetes Guidelines suite 2019–2020. She is an editorial board member of *Diabetes & Primary Care* and the *Journal of Diabetes Nursing*, a member of the Diabetes UK Research Study Group for diabetes-related complications, member of the Diabetes UK Healthcare Professional Advisory Committee and a course tutor for i-Heed for the diabetes diploma modules.



Dorothy Moore

Advanced Nurse Practitioner Diabetes, Kilkenny

Dorothy Moore is a Diabetes Advanced Nurse Practitioner (ANP), Integrated Care, working across St Luke's General Hospital, Kilkenny, and Carlow/Kilkenny Enhanced Community Care.

Dorothy has worked as a specialist diabetes nurse in research, acute and community settings. She took up a role as Clinical Nurse Specialist Diabetes in 2014 to lead service development, initially in South Tipperary and then across Carlow/Kilkenny community areas. Dorothy joined the Diabetes team in St Luke's Hospital in 2022 and, having previously achieved an MSc (Research) in Diabetes, she completed her Postgraduate Diploma in Nursing – Advanced Practice in 2023.

Her current ANP role sees her managing her caseload and delivering coordinated, advanced nursing care to people with diabetes and complex healthcare needs. Her special interest includes type 2 diabetes and chronic kidney disease, and she provides expert care to reduce the progression of chronic kidney disease in this cohort.



Patricia Murray

Advanced Nurse Practitioner Diabetes, Sligo University Hospital

Patricia Murray has been a Registered General Nurse since 1991 and has worked in diabetes since 1994. Following completion of a postgraduate qualification in Diabetes Nursing in 1996 and a Master's in Health Science (Advanced Practice) in 2010, she became a registered nurse prescriber in 2013.

Patricia has worked as a Clinical Nurse Specialist in Diabetes Mellitus since 1994, working in the role of Diabetes Service Development Coordinator from 2001 to 2003. She was a member of the National Diabetes Expert Advisory Group 2006–2008 and has continued involvement in local and national diabetes service development such as the HSeLanD online "Nursing Management of Adults with Type 2 Diabetes Mellitus".

Patricia worked as a CNS Diabetes Integrated Care for over 15 years, before becoming an Advanced Nurse Practitioner in Diabetes Integrated Care in 2017.

This is a promotional symposium developed and funded by Boehringer Ingelheim



The bigger picture in focus: How cardio, renal and metabolic conditions connect

🕒 10:40–11:25

SPEAKERS



Professor Donal Sexton

Consultant Nephrologist at St James's Hospital, Dublin

Professor Donal Sexton graduated in 2006 from the University of Galway and subsequently completed an MD and PhD in Clinical Epidemiology and Biostatistics. He completed a fellowship at the United States Renal Data System (USRDS) and the division of Renal Diseases and Hypertension, University of Minnesota, USA. He is currently the Clinical Lead at the Renal Department St James's Hospital and Clinical Associate Professor at Trinity College Dublin.



Professor Diarmuid Smith

Consultant Endocrinologist, Beaumont Hospital in Dublin

Professor Diarmuid Smith graduated from the University College Dublin and completed the Irish Specialist Registrar (SpR) training Programme in Endocrinology and Diabetes. He completed his MD Thesis in Diabetes at King's College, London. Professor Smith was previously the Health Service Executive (HSE) National Clinical Lead for Diabetes and was one of the Doctors for the Dublin Senior Football team from 2015 to 2025.

